



MONTHLY MEMBERSHIP PROGRESS REPORT

District 2 E1

Results as of: 10/31/2014

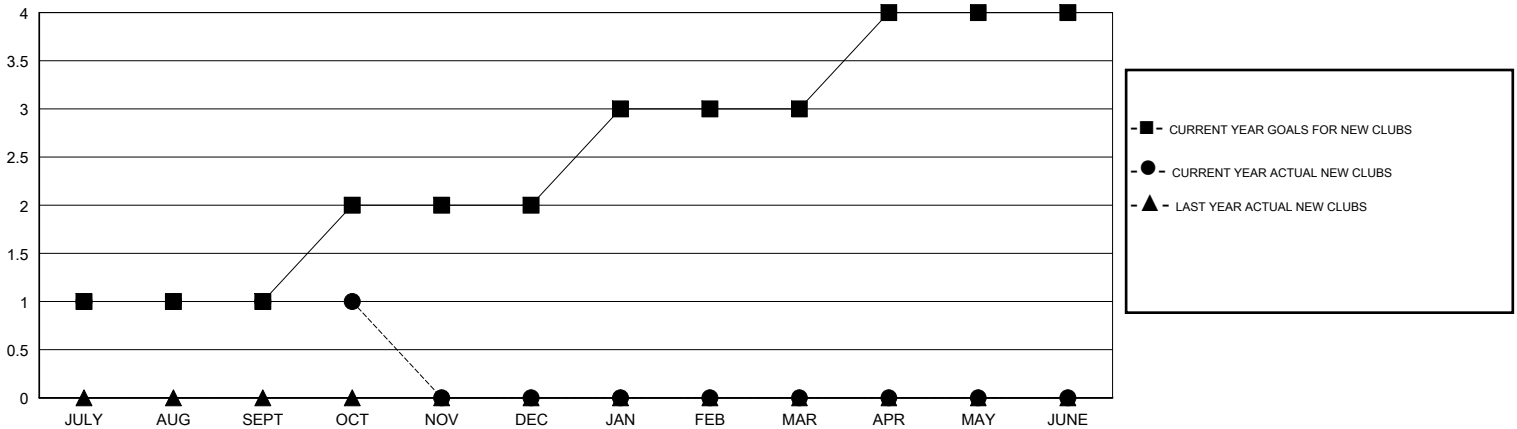
GMT: HAL GRIFFIN

LOCATION TEXAS

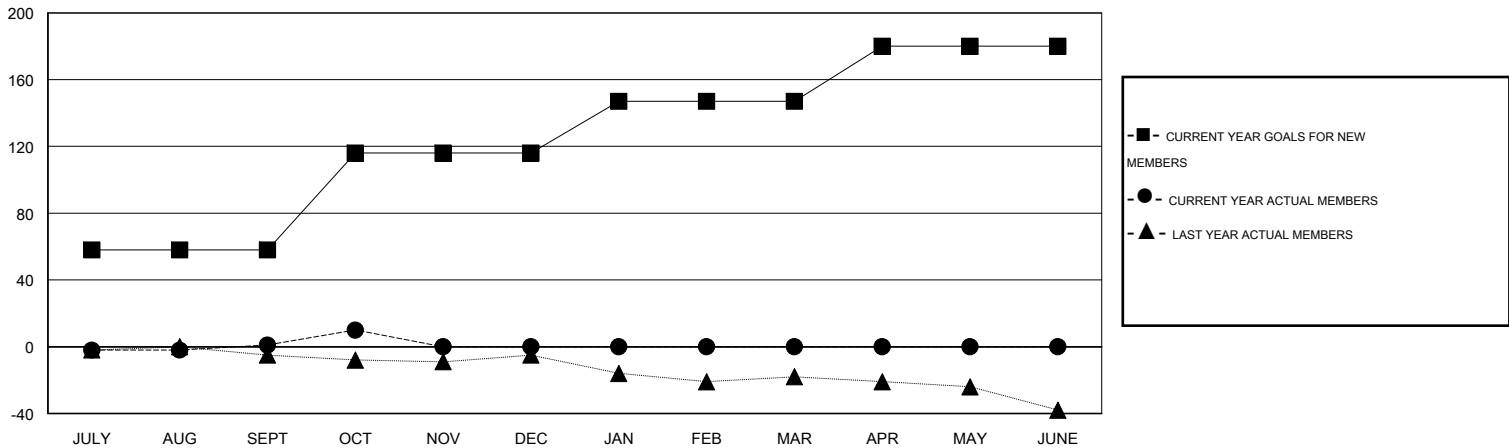
GMT CA 1

Clubs					Members				
RESULTS FOR 2014-2015					RESULTS FOR 2014-2015				
QUARTER	NEW CLUB GOAL	NEW CLUBS	DROPPED CLUBS	NET GAIN/LOSS	QUARTER	NEW MEMBER GOAL	CHARTER AND NEW MEMBERS ADDED	DROPPED MEMBERS	NET GAIN/LOSS
JULY/AUG/SEPT	1	1	2	-1	JULY/AUG/SEPT	58	46	45	1
OCT/NOV/DEC	1	0	0	0	OCT/NOV/DEC	58	20	11	9
JAN/FEB/MAR	1	0	0	0	JAN/FEB/MAR	31	0	0	0
APR/MAY/JUNE	1	0	0	0	APR/MAY/JUNE	33	0	0	0

GOALS AND ACTUAL NEW CLUBS CUMULATIVE



GOALS AND ACTUAL MEMBERS CUMULATIVE



DROPPED CLUBS: 2	19 CLUBS OF 56 ADDED 1 OR MORE NEW MEMBERS	<u>GENDER DISTRIBUTION</u>	
<u>DROPPED MEMBERS</u>		MALE	989 (74.75%)
DECEASED	CLICK HERE FOR HEALTH ASSESSMENT DATA	FEMALE	334 (25.25%)
CLUB CANCELLED		FAMILY UNIT MEMBERS	112
OTHER		HEAD OF HOUSEHOLD	55
TOTAL		NON-HEAD OF HOUSEHOLD	57